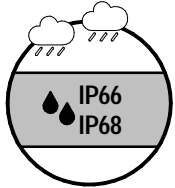


N x P4.. series

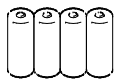
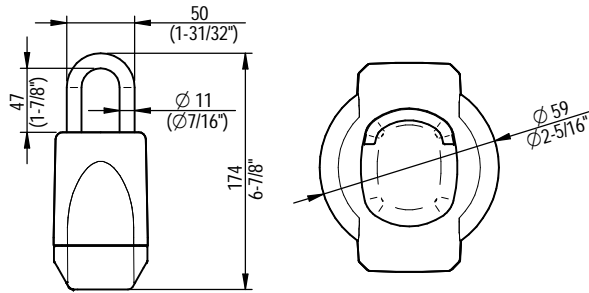
- Eng Installation guide
- D Montageanleitung
- F Guide d'installation
- E Guía de instalación
- NL Installatiehandleiding
- I Guida all'installazione



EN16864 : 2017
1 1 4 4 - D 3 4

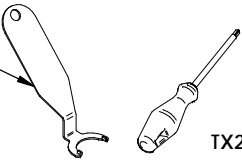


OUTDOOR Use!



SALTO Recommended Batteries SP01926-5

SP226009



TX20

Not included/Nicht enthalten/Non inclus/No incluido
Niet inbegrepen/Non incluso/Não incluso



Danger for electronic components due to electrostatic discharge.



www.saltoaccess.com/en/quick-links/manuals-and-guides/

SALTO Neo

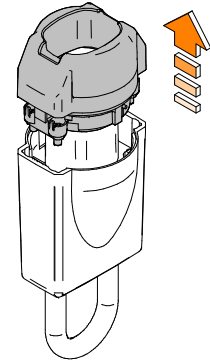
© 2020 SALTO Systems S.L. 226244-ED.- 26/05/2022

All contents current at time of publication. SALTO Systems S.L. reserves the right to change availability of any item in this catalog, its design, construction, and/or materials.

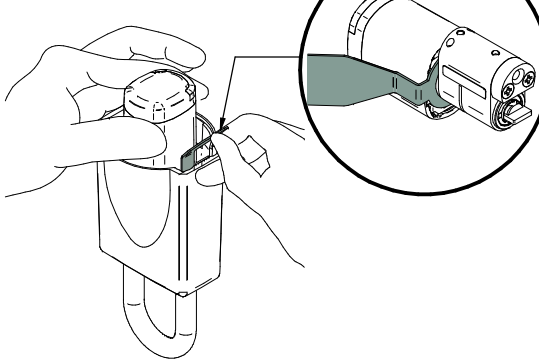
P4

Eng Installation D Montageanleitung F Installation E Instalación NL Handleidig I Montaggio P Instalação

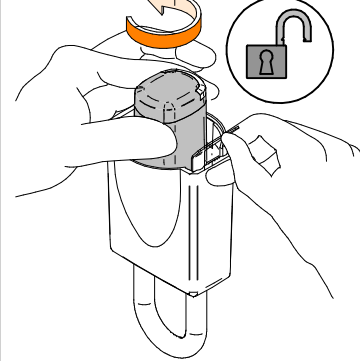
1



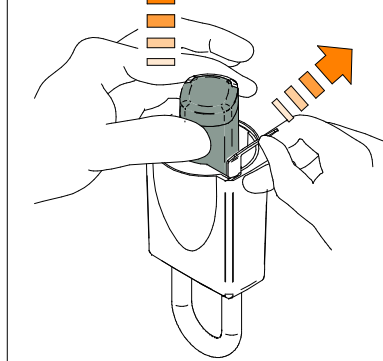
2



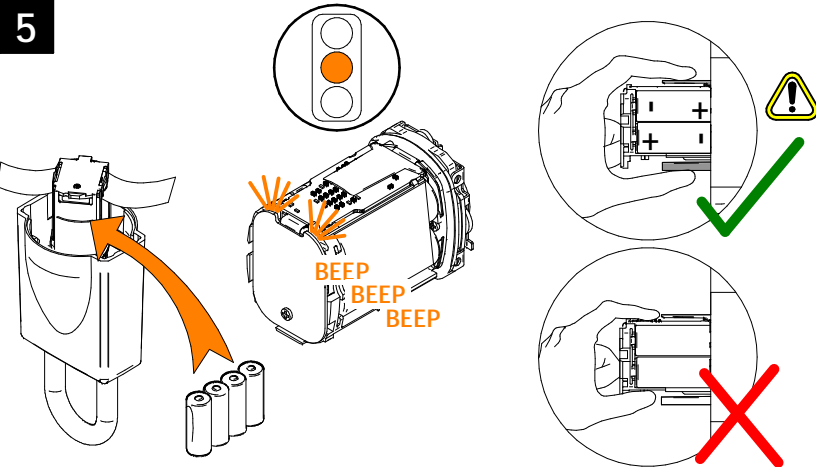
3



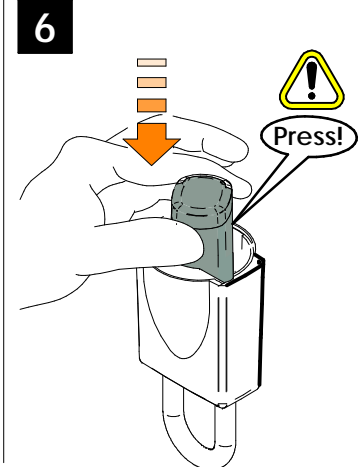
4



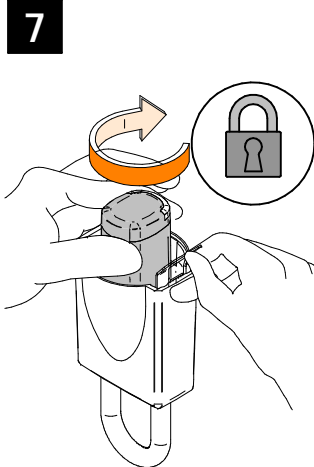
5



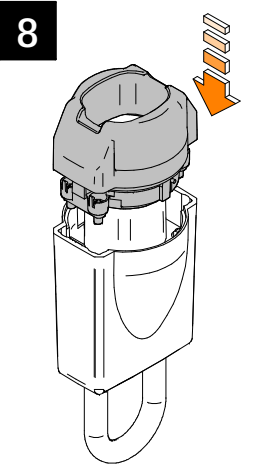
6



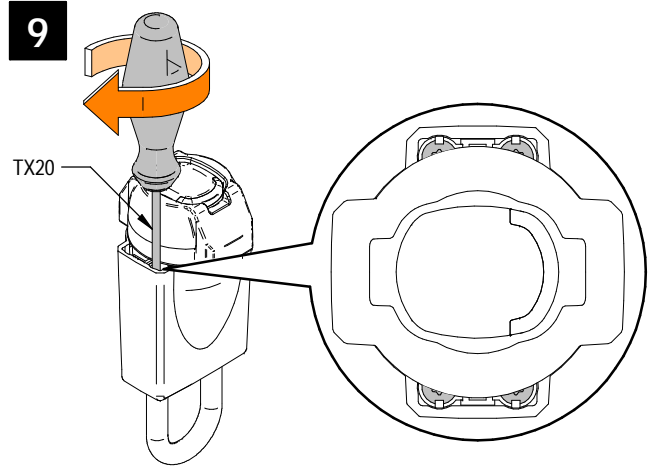
7



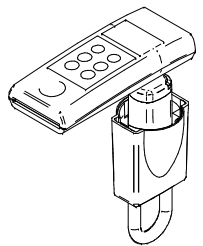
8

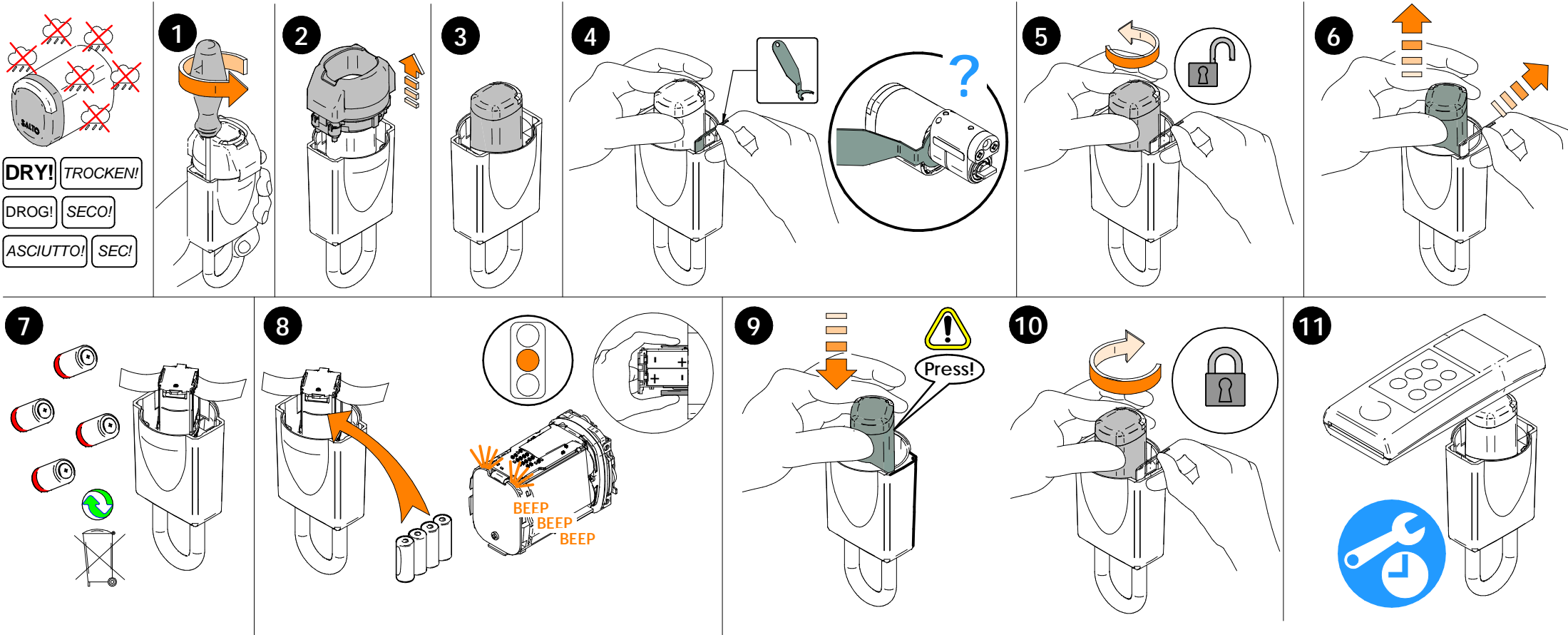


9



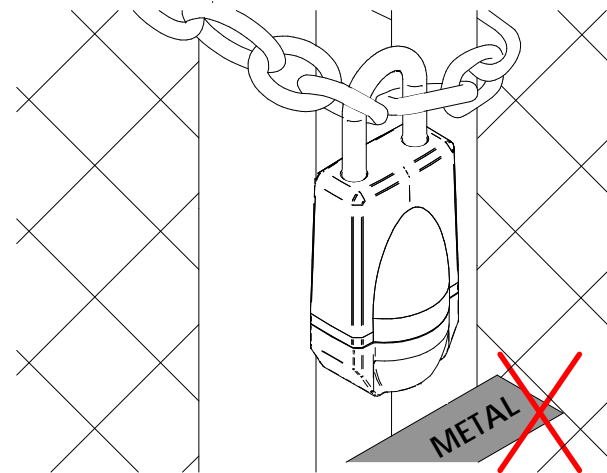
- Eng PROGRAM THE CYLINDER
- D SCHLOSS PROGRAMMIEREN
- F PROGRAMEZ LE CYLINDRE
- E PROGRAME EL CILINDRO
- NL PROGRAMMEER EN TEST THE CILINDER OP EEN CORRECTE WERKING.
- I PROGRAMARE IL CILINDRO





Eng The knob is uniquely paired to this cylinder, and will not work if you switch it with a different SALTO cylinder. / **E** El pomo está emparejado unicamente a este cilindro, no funcionará si lo conecta a otro cilindro SALTO diferente. / **D** Der Knauf ist eindeutig mit dem Zylinder gekoppelt und funktioniert nicht, wenn Sie einen anderen zylinder. / **F** Le bouton du lecteur SALTO est appairé au cylindre. Le cylindre ne fonctionnera pas si vous l'inverse avec un autre bouton SALTO. / **NL** De knop is is uniek gekoppeld aan de cilinder en zal niet werken als u de knop op een andere SALTO cilinder plaatst. / **I** Il pomolo è accoppiato univocamente con il corpo del cilindro, non funzionerà il dispositivo se si cambia con un altro pomolo.

Eng The product should not be modified in any way except in accordance with those modifications described in the instructions. / **E** El producto no debe ser modificado de ninguna manera, exceptuando las modificaciones descritas en las instrucciones. / **D** Das Produkt darf in keiner Weise verändert werden, außer in Übereinstimmung mit den in der Anleitung beschriebenen Weisen. / **F** Le produit ne peut être modifié de quelque manière que ce soit, sauf en respectant les modifications décrites dans les instructions. / **NL** Het product mag op geen enkele wijze worden aangepast, behalve in overeenstemming met de in de handleiding beschreven wijzigingen. / **I** Il prodotto non deve essere modificato in nessun modo se non secondo le modifiche descritte nelle istruzioni.



Eng Do not place any movable metallic object closer than 5cm in front of the reader.
D Platzieren Sie keine beweglichen Metallteile näher als 5 cm vor dem Leser.
F Ne placez aucun objet métallique mobile à moins de 5 cm du lecteur.
E No colocar ningún objeto móvil metálico delante del lector a menos de 5cm de distancia.
NL Plaats geen enkel beweegbaar metalen voorwerp dichterbij dan 5 cm voor de lezer.
I Non posizionare oggetti metallici mobili più vicini di 5 cm al lettore.