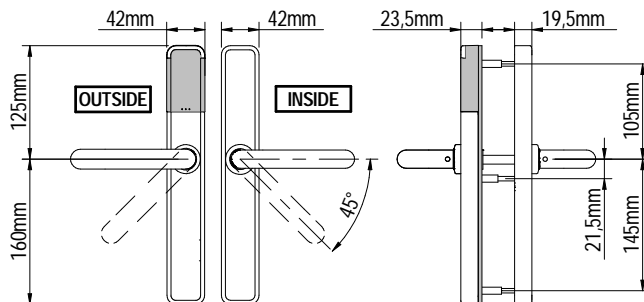


Installation guide

XS4 One High Security

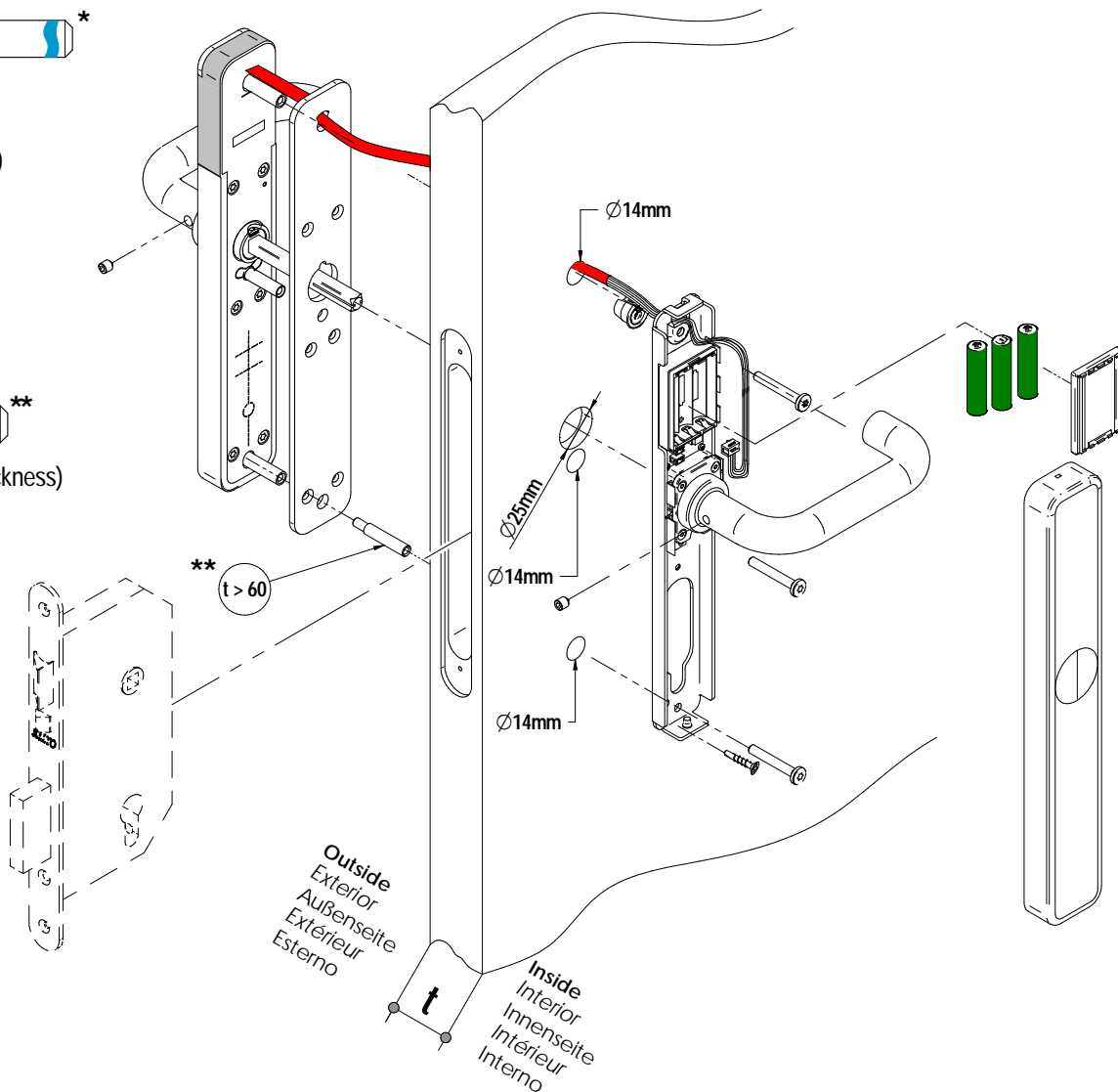
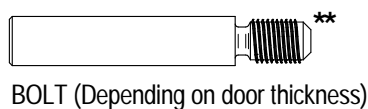
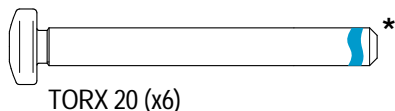
SALTO
inspiredaccess

- (Eng) Installation guide
- (E) Guía de instalación
- (D) Montageanleitung
- (F) Guide d'installation
- (I) Guida all'installazione
- (P) Guia de instalação



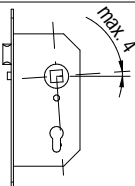
E i 750 xx..P series (1)
E i 751 xx..P
E i 753 xx..P

(1) PAS24 Standard complies only with 44mm and 54mm certified doors.



Mortise Lock not included
Cerradura de embutir no incluida
Einsteckschloss nicht enthalten
Serrure à mortaiser non incluse
Serratura non inclusa
Fechadura de embutir não incluida

- (Eng) * For door thickness > 60mm 6 screws are supplied, but only 3 must be installed. Make sure to select the correct length (see page 3).
- (E) * Para grosor de puerta > 60mm se suministran 6 tornillos, pero solo se han de instalar 3. Asegúrese de seleccionar la longitud correcta (ver pág. 3).
- (D) * Für Türstärken > 60 mm werden 6 Schrauben geliefert, wovon aber nur 3 benötigt werden. Bitte stellen Sie sicher, dass Sie die korrekte Länge verwenden (siehe S. 3).
- (F) * Pour une épaisseur de porte > 60mm, 6 vis sont fournies, mais seulement 3 doivent être installées. Veuillez vous assurer de sélectionner la bonne longueur (voir page 3).
- (I) * Per porte con spessore > 60mm, vengono forniti 6 viti, ma solo 3 devono essere installate. Assicurati di scegliere la lunghezza corretta (vedi pagina 3).
- (P) * Para portas com espessura > 60mm são fornecidos 6 parafusos, mas apenas 3 devem ser instalados. Certifique-se de selecionar o comprimento correto (ver página 3).



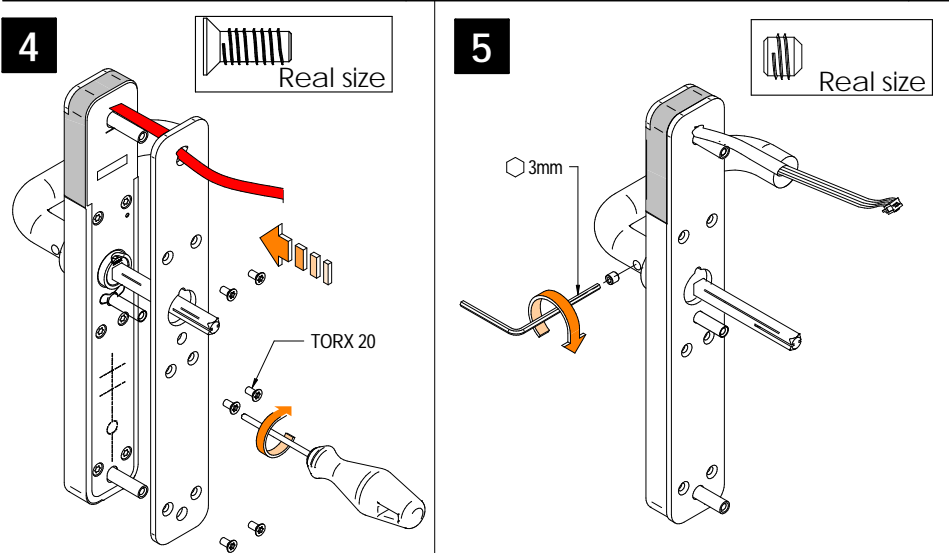
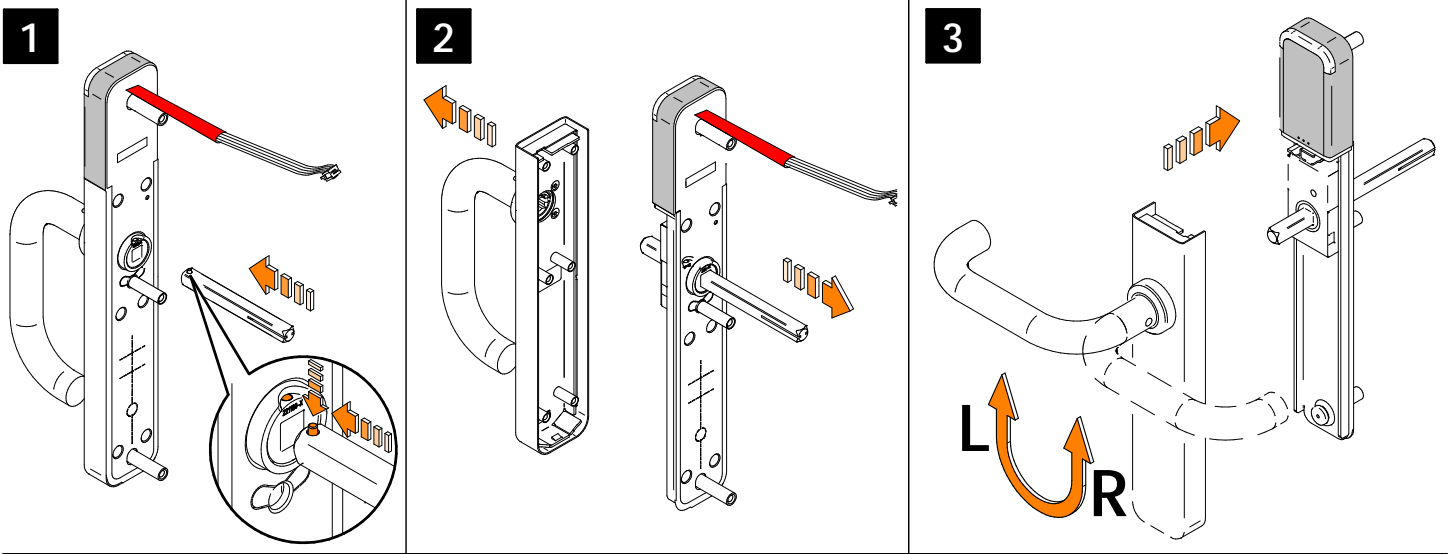
- (Eng) SALTO recommends the use of a mortise lock, with a maximum 4° pre-turn.
- (E) SALTO recomienda utilizar cerraduras con un pregiro máximo de 4°.
- (D) SALTO empfiehlt den Einsatz von Einsteckschlössern mit max. 4° Vorspannung.
- (F) SALTO recommande d'utiliser des serrures à mortaiser avec un angle au repos de 4° maximum.
- (I) SALTO raccomanda l'utilizzo di una serratura con un angolo di pre-rotazione massimo di 4°.
- (P) SALTO recomenda utilizar fechaduras com uma pré rotação máxima de 4°.

Installation guide

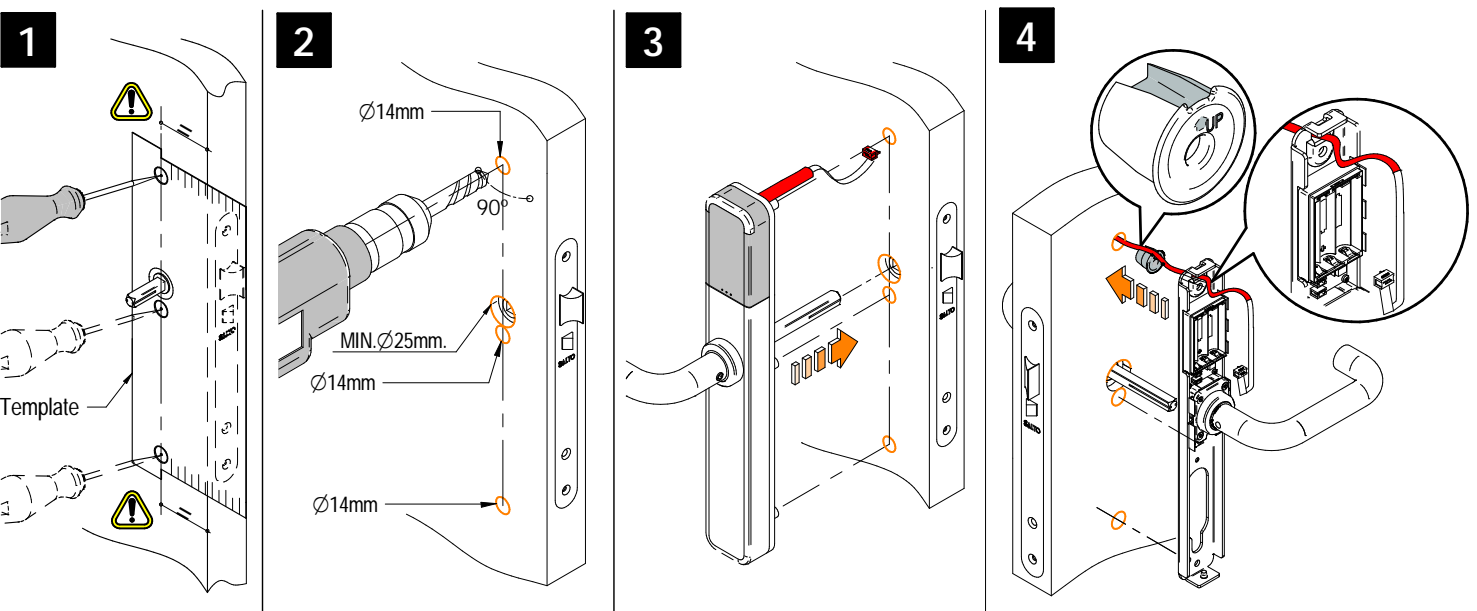
XS4 One High Security

SALTO
inspired access

Ⓔ Select handing
 Ⓔ Seleccione mano
 Ⓔ Drückerrichtung wählen
 Ⓔ Choisir le sens de la bêcheille
Ⓔ Scegliere il verso
 Ⓔ Seleccione mão



Ⓔ Installation
 Ⓔ Instalación
 Ⓔ Installation
 Ⓔ Installation
 Ⓔ Installazione
 Ⓔ Instalação



XS4 One

Installation guide

XS4 One High Security

SALTO
inspiredaccess

5

NOT OK

TORX 20

| t | SCREWS BAG |
|---------------|------------|
| 32mm ÷ 47mm | S2 |
| 45mm ÷ 60mm | S4 |
| 60mm ÷ 68mm | S1 |
| 68mm ÷ 75mm | S2 |
| 75mm ÷ 83mm | S3 |
| 83mm ÷ 90mm | S4 |
| 90mm ÷ 98mm | S1 |
| 98mm ÷ 105mm | S2 |
| 105mm ÷ 113mm | S3 |
| 113mm ÷ 120mm | S4 |

6

LR03 AAA

Real size

7

8

a

b

9

TORX 20

Eng TO FIX CLOCKWISE

- (E) FIJACIÓN: GIRAR EN SENTIDO HORARIO
- (D) UHRZEIGERSINN FESTSCHRUBEN
- (F) POUR FIXER: SENS HORAIRE
- (I) PER FISSARE: SENSO ORARIO
- (P) FIXAÇÃO: RODAR EM SENTIDO DOS PONTEIROS DO RELÓGIO.

!

(Eng) **AT THIS POINT DO NOT CLOSE THE DOOR PROGRAM THE LOCK FIRST**
Follow user manual

(E) **NO CIERRE LA PUERTA. PROGRAME LA CERRADURA**
Consulte el manual del usuario

(D) **TÜR NICHT SCHLIESSEN. ZUERST SCHLOSS PROGRAMMIEREN**
Folgen Sie dem Benutzerhandbuch

(F) **NE FERMEZ PAS LA PORTE. PROGRAMMEZ LA BÉQUILLE AVANT**
Consultez le manuel utilisateur

(I) **PROGRAMARE LA SERRATURA PRIMA DI CHIUDERE LA PORTA.**
Consultare il manuale utente

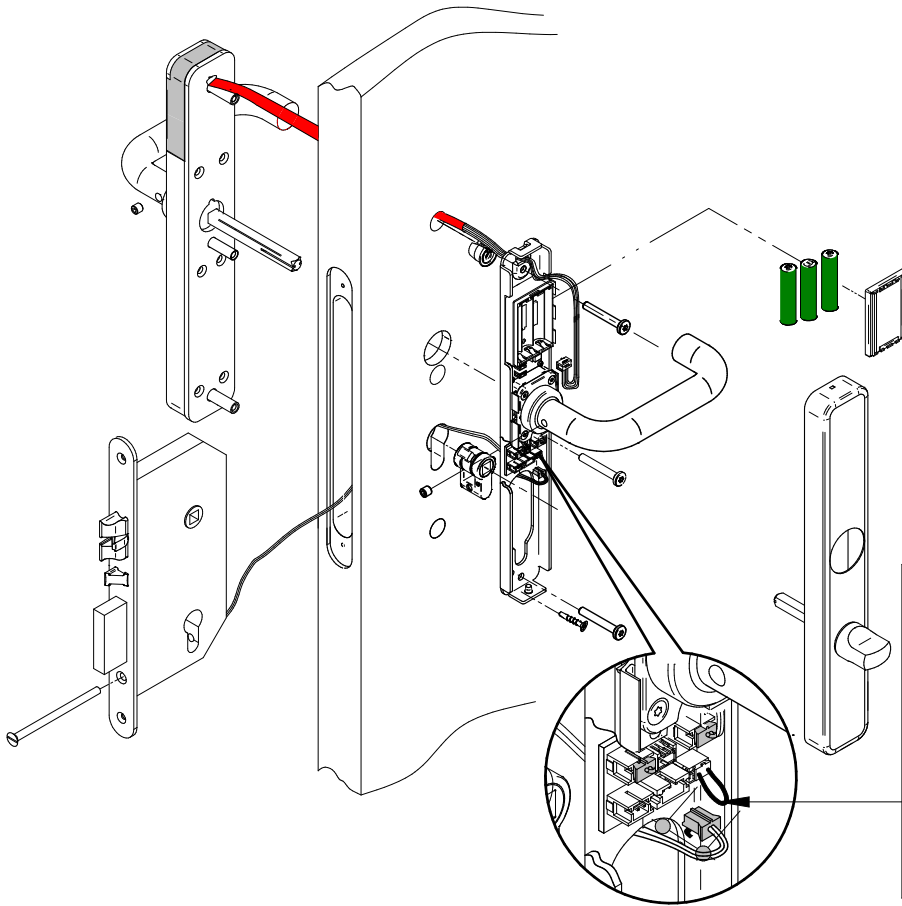
(P) **NESTE PONTO NÃO FECHÉ A PORTA. PROGRAME O ESCUDO PRIMEIRO**
Consult manual do usuário

Installation guide

XS4 One High Security

SALTO
inspiredaccess

E i 751 xx..P
E i 753 xx..P

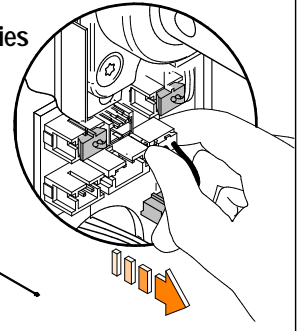


**ONLY FOR LE7Sxx series
MORTISE LOCK***



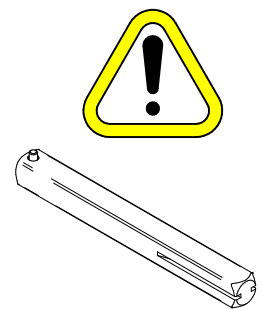
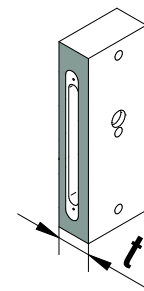
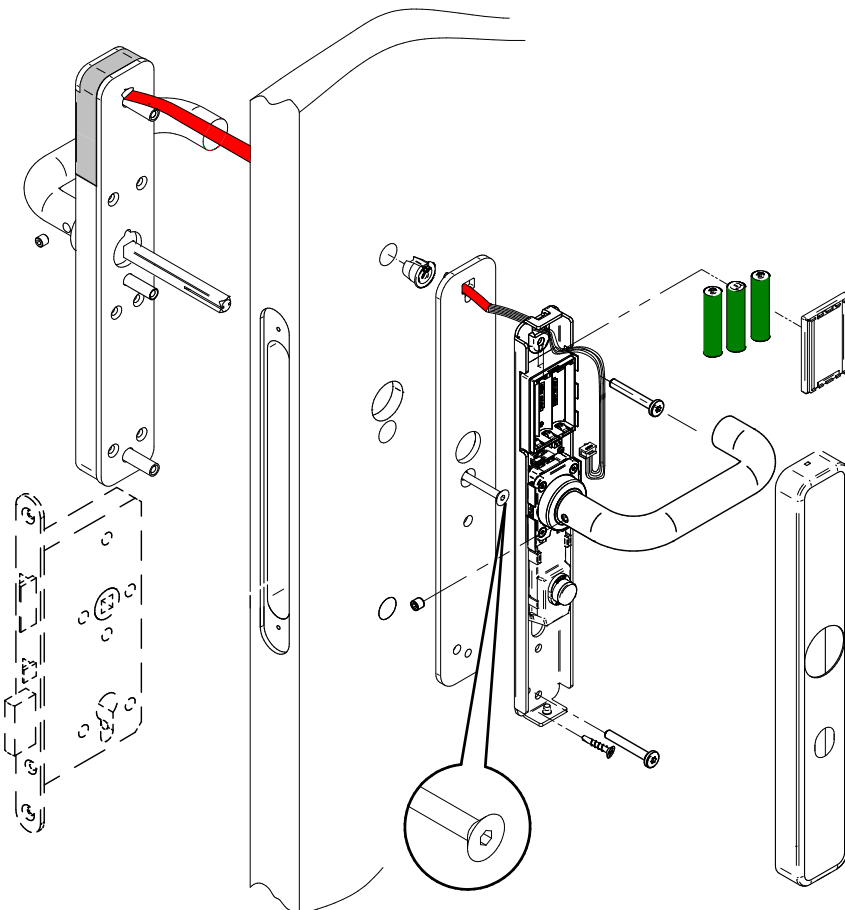
Unplug

*Desconnecte
Débranchez
Ziehen
Scollegare
Desliguar*



(*) XS4 One + LE7Sxx PAS24 testing pending

E i 756 xx..P
E i 757 xx..P



| t | |
|---------------|----|
| 32mm ÷ 40mm | |
| 38mm ÷ 50mm | * |
| 45mm ÷ 53mm | * |
| 53mm ÷ 60mm | * |
| 60mm ÷ 68mm | * |
| 68mm ÷ 75mm | * |
| 75mm ÷ 83mm | * |
| 83mm ÷ 90mm | * |
| 90mm ÷ 98mm | * |
| 98mm ÷ 105mm | * |
| 106mm ÷ 113mm | ** |
| 113mm ÷ 120mm | ** |

(*) Depending on the door thickness and according to this chart you might need to change the installed spindle by the spare one included on the box.

(*) *En fonction de l'épaisseur de la porte et selon ce tableau, vous devrez peut-être remplacer le carré installé par celui de rechange inclus dans la boîte.*

(*) *En función del espesor de puerta definido en esta tabla, es necesario que instale el cuadrado suministrado en la caja.*

(**) *Special / Spécial / Especial*

XS4 One