

//DATASHEET

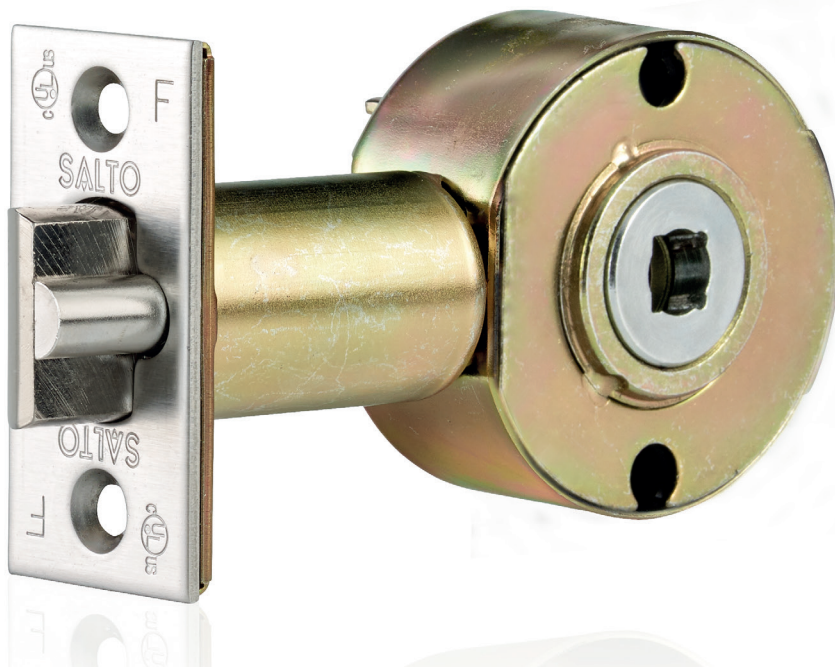
SALTO Locks |

Access control requires a good, reliable door locking system. SALTO offers a wide range of mortise locks in order to ensure that the door is correctly locked.

Whether you need ANSI mortise locks, Euro locks for wooden doors or narrow profiles, DIN locks, Scandinavian standard locks, cylindrical cartridge latches or automatic locks with privacy and panic functions, **SALTO has the locking system you need.**

CYLINDRICAL LATCH LCxK

SALTO
inspired**access**



SALTO LOCKS CYLINDRICAL LATCH

With the SALTO XS4 cylindrical latch, you can replace existing traditional knob sets and upgrade them with a state of the art electronic access control system.

SALTO Cartridge cylindrical latches meet ANSI A156.2 Grade 1 requirements, and enable users to replace old cylindrical or tubular latches with new, high quality ones compatible with SALTO electronic escutcheons.

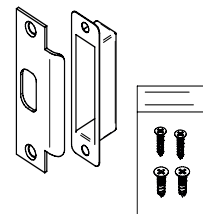
SALTO CYLINDRICAL LATCH

LC1K CYLINDRICAL LATCH

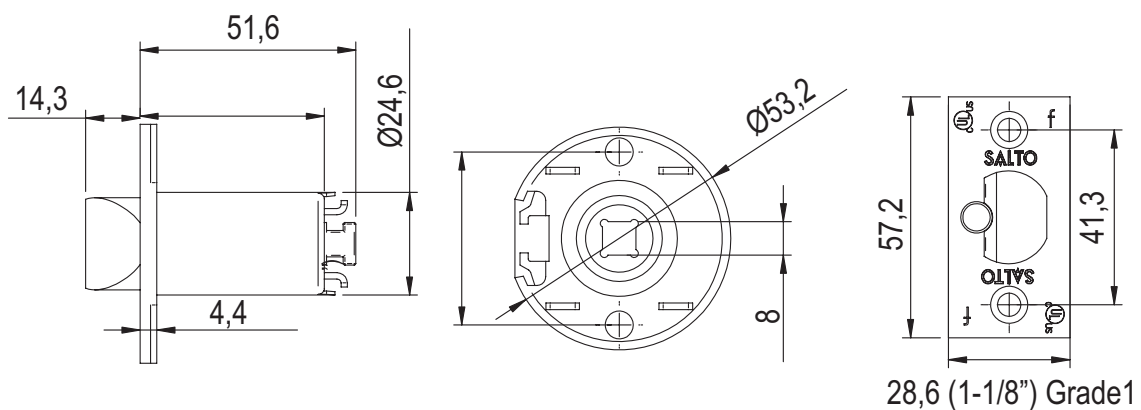


MAIN CHARACTERISTICS:

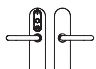
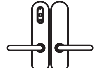

- Meets ANSI A156.2 Grade 1 cylindrical latch requirements.
- Suitable for XS4 Original ANSI standard escutcheons and XS4 Mini ANSI models.
- Cartridge, latch and deadbolt made of steel.
- Equipped with auxiliary latch (anti card system) to prevent unwanted intrusions.
- Hub turning angle 58°.
- Available backsets:
 - 60mm (2-3/8")
 - 70mm (2-3/4")
 - 95mm (3-3/4")
 - 127mm (5")
- Front plate shape: squared 28,6mm (1-1/8") x 57,2mm (2-1/4")
- Symmetrical latch for more convenience, no handing needed.
- ASA strike plate and dust box included.



DIMENSIONS:



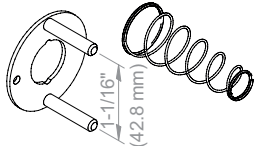
REFERENCES AND COMPATIBILITIES

REF	DESCRIPTION	COMPATIBLE SALTO ESCUTCHEONS
LC1KC60	SALTO LC1K, Grade 1 cylindrical latch 60mm (2-3/8") backset	Ei6xxm00fft8 
LC1KC70	SALTO LC1K, Grade 1 cylindrical latch 70mm (2-3/4") backset	Ai6xxm00fft8 
LC1KC95	SALTO LC1K, Grade 1 cylindrical latch 95mm (3-3/4") backset	Cx2x0NxxCSx 
LC1KC27	SALTO LC1K, Grade 1 cylindrical latch 127mm (5") backset	(Included in the reference)

ACCESSORIES

SALTO Cylindrical latch alignment kit for installation.

Accessory needed when installed along with Ax6xx or Ex6xxx SALTO escutcheons to fix and adjust the position of the LCxK cylindrical latch with the escutcheon.

REF	DESCRIPTION	COMPATIBLE SALTO ESCUTCHEONS
01848	SALTO Cylindrical latch LC1K guiding alignment support kit 	Ei6xxm00fft8 Ai6xxm00fft8

