

## DATASHEET

### Mortise locks by SALTO

Access control requires a good, reliable door smart locking system. SALTO offers a wide range of mortise locks in order to ensure that the door is correctly locked. Whether you need ANSI mortise locks, Euro DIN locks for wooden doors or narrow profiles, Scandinavian locks, cylindrical cartridge latches or automatic locks with privacy and panic functions, SALTO has the locking system you need.

[www.saltosystems.com](http://www.saltosystems.com)

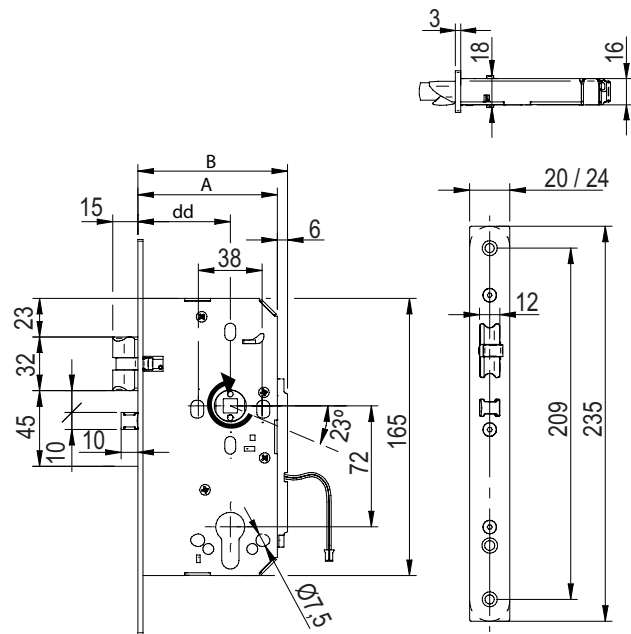
#### TECHNICAL SPECIFICATIONS: MORTISE LOCK - LE7Sx5

**SALTO**  
inspired access

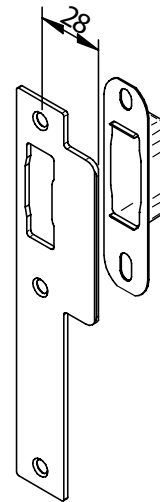


**TECHNICAL DATA:**

Model:	SALTO LE7S05
Mortise lock type:	DIN mortise lock
Faceplate dimensions (H x W):	235mm x 20mm 235mm x 24mm
Faceplate shape	Round or Squared
Handle rotation:	23°
Square spindles:	8 or 9mm
Lock case material:	Steel
Latch material:	Stainless steel with 15mm throw.
Deadbolt material:	No deadbolt.
Latch handing:	Reversible.
Auxiliary latch (anticard):	10mm throw
Built in detectors	Door detector
Certifications:	CE, EN 12209

**TECHNICAL DRAWING:****FINISHES:****Faceplate finish:**

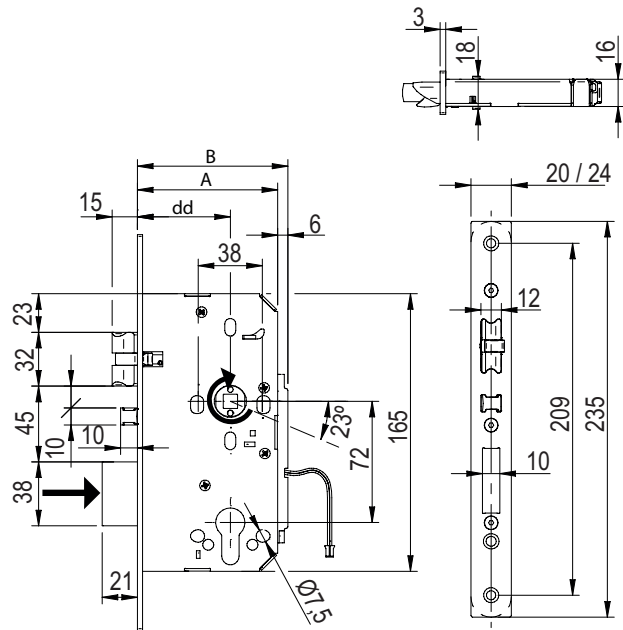
IM Satin stainless steel:	•
IP Bright stainless steel:	—
IA Antique brass:	—
PP PVD bright brass type:	—
EL PVD satin brass type:	•
NE Black chromium:	—
BC BioCote anti-microbial:	—



**TECHNICAL DATA:**

Model:	SALTO LE7S15
Mortise lock type:	DIN compatible antipanic mortise lock
Faceplate dimensions (H x W):	235mm x 20mm 235mm x 24mm
Faceplate shape	Round or Squared
Handle rotation:	23°
Square spindles:	8 or 9mm
Lock case material:	Steel
Latch material:	Stainless steel with 15mm throw.
Deadbolt material:	21mm throw.
Latch handing:	Reversible.
Auxiliary latch (anticard):	10mm throw.
Built in detectors	Door detector
Certifications:	CE, EN 12209.

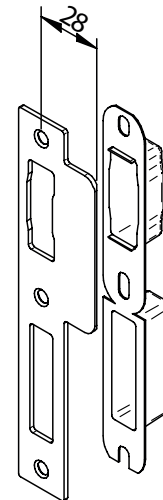
**TECHNICAL DRAWING:**



**FINISHES:**

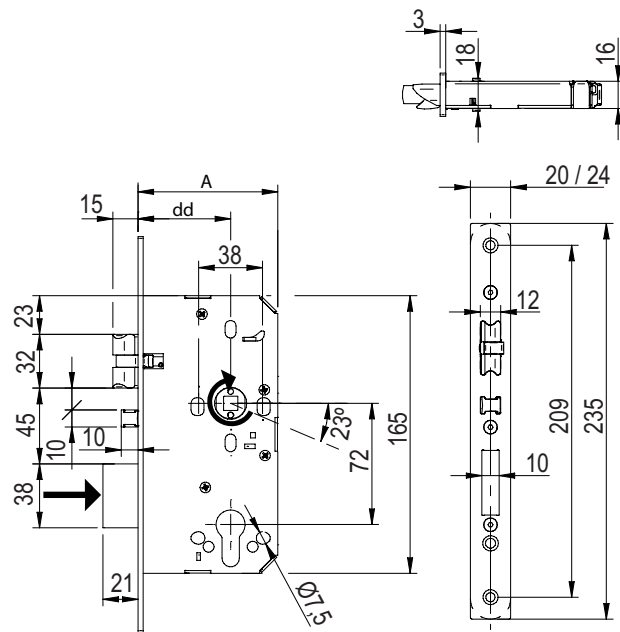
**Faceplate finishes:**

IM Satin stainless steel:	•
IP Bright stainless steel:	—
IA Antique brass:	—
PP PVD bright brass type:	—
EL PVD satin brass type:	•
NE Black chromium:	—
BC BioCote anti-microbial:	—



**TECHNICAL DATA:**

Model:	SALTO LE7S25
Mortise lock type:	DIN compatible mortise lock
Faceplate dimensions (H x W):	235mm x 20mm 235mm x 24mm
Faceplate shape	Round or Squared
Handle rotation:	23°
Square spindles:	8 or 9mm
Lock case material:	Steel
Latch material:	Stainless steel with 15mm throw.
Deadbolt material:	No deadbolt
Latch handing:	Reversible.
Auxiliary latch (anticard):	10mm throw.
Built in detectors	Door detector
Certifications:	CE, EN 12209.

**TECHNICAL DRAWING:****FINISHES:****Faceplate finish:**

IM Satin stainless steel:	•
IP Bright stainless steel:	—
IA Antique brass:	—
PP PVD bright brass type:	—
EL PVD satin brass type:	•
NE Black chromium:	—
BC BioCote anti-microbial:	—

